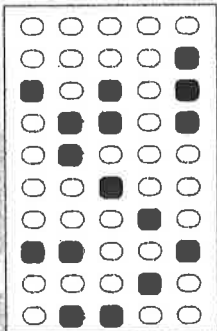


# HOJA DE EXAMEN

NO FIRME ESTE EJERCICIO NI CONSIGNE NINGUN OTRO DATO



TIPO EXAMEN

1 2 3 4 5 6 7 8 9 10

## RESPUESTAS

1	<input type="radio"/>	B	<input type="radio"/>	C	<input type="radio"/>	D	31	A	<input type="radio"/>	B	<input type="radio"/>	C	<input type="radio"/>	D	61	<input type="radio"/>	B	<input type="radio"/>	C	<input type="radio"/>	D	91	A	<input type="radio"/>	B	<input type="radio"/>	C	<input type="radio"/>	D	121	A	<input type="radio"/>	B	<input type="radio"/>	C	<input type="radio"/>	D	
2	A	<input type="radio"/>	B	<input type="radio"/>	C	<input type="radio"/>	32	<input type="radio"/>	B	<input type="radio"/>	C	<input type="radio"/>	D	62	A	<input type="radio"/>	B	<input type="radio"/>	C	<input type="radio"/>	D	92	A	<input type="radio"/>	B	<input type="radio"/>	C	<input type="radio"/>	D	122	A	<input type="radio"/>	B	<input type="radio"/>	C	<input type="radio"/>	D	
3	<input type="radio"/>	B	<input type="radio"/>	C	<input type="radio"/>	D	33	A	<input type="radio"/>	B	<input type="radio"/>	C	<input type="radio"/>	D	63	A	<input type="radio"/>	B	<input type="radio"/>	C	<input type="radio"/>	D	93	A	<input type="radio"/>	B	<input type="radio"/>	C	<input type="radio"/>	D	123	A	<input type="radio"/>	B	<input type="radio"/>	C	<input type="radio"/>	D
4	A	<input type="radio"/>	B	<input type="radio"/>	C	<input type="radio"/>	34	A	<input type="radio"/>	B	<input type="radio"/>	C	<input type="radio"/>	D	64	<input type="radio"/>	B	<input type="radio"/>	C	<input type="radio"/>	D	94	A	<input type="radio"/>	B	<input type="radio"/>	C	<input type="radio"/>	D	124	A	<input type="radio"/>	B	<input type="radio"/>	C	<input type="radio"/>	D	
5	A	<input type="radio"/>	B	<input type="radio"/>	C	<input type="radio"/>	35	A	<input type="radio"/>	B	<input type="radio"/>	C	<input type="radio"/>	D	65	A	<input type="radio"/>	B	<input type="radio"/>	C	<input type="radio"/>	D	95	A	<input type="radio"/>	B	<input type="radio"/>	C	<input type="radio"/>	D	125	A	<input type="radio"/>	B	<input type="radio"/>	C	<input type="radio"/>	D
6	<input type="radio"/>	B	<input type="radio"/>	C	<input type="radio"/>	D	36	A	<input type="radio"/>	B	<input type="radio"/>	C	<input type="radio"/>	D	66	A	<input type="radio"/>	B	<input type="radio"/>	C	<input type="radio"/>	D	96	A	<input type="radio"/>	B	<input type="radio"/>	C	<input type="radio"/>	D	126	A	<input type="radio"/>	B	<input type="radio"/>	C	<input type="radio"/>	D
7	A	<input type="radio"/>	B	<input type="radio"/>	C	<input type="radio"/>	37	A	<input type="radio"/>	B	<input type="radio"/>	C	<input type="radio"/>	D	67	<input type="radio"/>	B	<input type="radio"/>	C	<input type="radio"/>	D	97	A	<input type="radio"/>	B	<input type="radio"/>	C	<input type="radio"/>	D	127	A	<input type="radio"/>	B	<input type="radio"/>	C	<input type="radio"/>	D	
8	A	<input type="radio"/>	B	<input type="radio"/>	C	<input type="radio"/>	38	A	<input type="radio"/>	B	<input type="radio"/>	C	<input type="radio"/>	D	68	A	<input type="radio"/>	B	<input type="radio"/>	C	<input type="radio"/>	D	98	A	<input type="radio"/>	B	<input type="radio"/>	C	<input type="radio"/>	D	128	A	<input type="radio"/>	B	<input type="radio"/>	C	<input type="radio"/>	D
9	<input type="radio"/>	B	<input type="radio"/>	C	<input type="radio"/>	D	39	A	<input type="radio"/>	B	<input type="radio"/>	C	<input type="radio"/>	D	69	A	<input type="radio"/>	B	<input type="radio"/>	C	<input type="radio"/>	D	99	A	<input type="radio"/>	B	<input type="radio"/>	C	<input type="radio"/>	D	129	A	<input type="radio"/>	B	<input type="radio"/>	C	<input type="radio"/>	D
10	A	<input type="radio"/>	B	<input type="radio"/>	C	<input type="radio"/>	40	A	<input type="radio"/>	B	<input type="radio"/>	C	<input type="radio"/>	D	70	A	<input type="radio"/>	B	<input type="radio"/>	C	<input type="radio"/>	D	100	A	<input type="radio"/>	B	<input type="radio"/>	C	<input type="radio"/>	D	130	A	<input type="radio"/>	B	<input type="radio"/>	C	<input type="radio"/>	D
11	A	<input type="radio"/>	B	<input type="radio"/>	C	<input type="radio"/>	41	A	<input type="radio"/>	B	<input type="radio"/>	C	<input type="radio"/>	D	71	<input type="radio"/>	B	<input type="radio"/>	C	<input type="radio"/>	D	101	A	<input type="radio"/>	B	<input type="radio"/>	C	<input type="radio"/>	D	131	A	<input type="radio"/>	B	<input type="radio"/>	C	<input type="radio"/>	D	
12	A	<input type="radio"/>	B	<input type="radio"/>	C	<input type="radio"/>	42	A	<input type="radio"/>	B	<input type="radio"/>	C	<input type="radio"/>	D	72	A	<input type="radio"/>	B	<input type="radio"/>	C	<input type="radio"/>	D	102	A	<input type="radio"/>	B	<input type="radio"/>	C	<input type="radio"/>	D	132	A	<input type="radio"/>	B	<input type="radio"/>	C	<input type="radio"/>	D
13	<input type="radio"/>	B	<input type="radio"/>	C	<input type="radio"/>	D	43	A	<input type="radio"/>	B	<input type="radio"/>	C	<input type="radio"/>	D	73	<input type="radio"/>	B	<input type="radio"/>	C	<input type="radio"/>	D	103	A	<input type="radio"/>	B	<input type="radio"/>	C	<input type="radio"/>	D	133	A	<input type="radio"/>	B	<input type="radio"/>	C	<input type="radio"/>	D	
14	A	<input type="radio"/>	B	<input type="radio"/>	C	<input type="radio"/>	44	A	<input type="radio"/>	B	<input type="radio"/>	C	<input type="radio"/>	D	74	A	<input type="radio"/>	B	<input type="radio"/>	C	<input type="radio"/>	D	104	A	<input type="radio"/>	B	<input type="radio"/>	C	<input type="radio"/>	D	134	A	<input type="radio"/>	B	<input type="radio"/>	C	<input type="radio"/>	D
15	A	<input type="radio"/>	B	<input type="radio"/>	C	<input type="radio"/>	45	<input type="radio"/>	B	<input type="radio"/>	C	<input type="radio"/>	D	75	A	<input type="radio"/>	B	<input type="radio"/>	C	<input type="radio"/>	D	105	A	<input type="radio"/>	B	<input type="radio"/>	C	<input type="radio"/>	D	135	A	<input type="radio"/>	B	<input type="radio"/>	C	<input type="radio"/>	D	
16	<input type="radio"/>	B	<input type="radio"/>	C	<input type="radio"/>	D	46	A	<input type="radio"/>	B	<input type="radio"/>	C	<input type="radio"/>	D	76	A	<input type="radio"/>	B	<input type="radio"/>	C	<input type="radio"/>	D	106	A	<input type="radio"/>	B	<input type="radio"/>	C	<input type="radio"/>	D	136	A	<input type="radio"/>	B	<input type="radio"/>	C	<input type="radio"/>	D
17	A	<input type="radio"/>	B	<input type="radio"/>	C	<input type="radio"/>	47	A	<input type="radio"/>	B	<input type="radio"/>	C	<input type="radio"/>	D	77	A	<input type="radio"/>	B	<input type="radio"/>	C	<input type="radio"/>	D	107	A	<input type="radio"/>	B	<input type="radio"/>	C	<input type="radio"/>	D	137	A	<input type="radio"/>	B	<input type="radio"/>	C	<input type="radio"/>	D
18	A	<input type="radio"/>	B	<input type="radio"/>	C	<input type="radio"/>	48	A	<input type="radio"/>	B	<input type="radio"/>	C	<input type="radio"/>	D	78	A	<input type="radio"/>	B	<input type="radio"/>	C	<input type="radio"/>	D	108	A	<input type="radio"/>	B	<input type="radio"/>	C	<input type="radio"/>	D	138	A	<input type="radio"/>	B	<input type="radio"/>	C	<input type="radio"/>	D
19	A	<input type="radio"/>	B	<input type="radio"/>	C	<input type="radio"/>	49	A	<input type="radio"/>	B	<input type="radio"/>	C	<input type="radio"/>	D	79	A	<input type="radio"/>	B	<input type="radio"/>	C	<input type="radio"/>	D	109	A	<input type="radio"/>	B	<input type="radio"/>	C	<input type="radio"/>	D	139	A	<input type="radio"/>	B	<input type="radio"/>	C	<input type="radio"/>	D
20	A	<input type="radio"/>	B	<input type="radio"/>	C	<input type="radio"/>	50	<input type="radio"/>	B	<input type="radio"/>	C	<input type="radio"/>	D	80	A	<input type="radio"/>	B	<input type="radio"/>	C	<input type="radio"/>	D	110	<input type="radio"/>	B	<input type="radio"/>	C	<input type="radio"/>	D	140	A	<input type="radio"/>	B	<input type="radio"/>	C	<input type="radio"/>	D		
21	<input type="radio"/>	B	<input type="radio"/>	C	<input type="radio"/>	D	51	A	<input type="radio"/>	B	<input type="radio"/>	C	<input type="radio"/>	D	81	A	<input type="radio"/>	B	<input type="radio"/>	C	<input type="radio"/>	D	111	A	<input type="radio"/>	B	<input type="radio"/>	C	<input type="radio"/>	D	141	A	<input type="radio"/>	B	<input type="radio"/>	C	<input type="radio"/>	D
22	A	<input type="radio"/>	B	<input type="radio"/>	C	<input type="radio"/>	52	A	<input type="radio"/>	B	<input type="radio"/>	C	<input type="radio"/>	D	82	<input type="radio"/>	B	<input type="radio"/>	C	<input type="radio"/>	D	112	<input type="radio"/>	B	<input type="radio"/>	C	<input type="radio"/>	D	142	A	<input type="radio"/>	B	<input type="radio"/>	C	<input type="radio"/>	D		
23	A	<input type="radio"/>	B	<input type="radio"/>	C	<input type="radio"/>	53	A	<input type="radio"/>	B	<input type="radio"/>	C	<input type="radio"/>	D	83	A	<input type="radio"/>	B	<input type="radio"/>	C	<input type="radio"/>	D	113	A	<input type="radio"/>	B	<input type="radio"/>	C	<input type="radio"/>	D	143	A	<input type="radio"/>	B	<input type="radio"/>	C	<input type="radio"/>	D
24	A	<input type="radio"/>	B	<input type="radio"/>	C	<input type="radio"/>	54	<input type="radio"/>	B	<input type="radio"/>	C	<input type="radio"/>	D	84	A	<input type="radio"/>	B	<input type="radio"/>	C	<input type="radio"/>	D	114	A	<input type="radio"/>	B	<input type="radio"/>	C	<input type="radio"/>	D	144	A	<input type="radio"/>	B	<input type="radio"/>	C	<input type="radio"/>	D	
25	A	<input type="radio"/>	B	<input type="radio"/>	C	<input type="radio"/>	55	<input type="radio"/>	B	<input type="radio"/>	C	<input type="radio"/>	D	85	A	<input type="radio"/>	B	<input type="radio"/>	C	<input type="radio"/>	D	115	A	<input type="radio"/>	B	<input type="radio"/>	C	<input type="radio"/>	D	145	A	<input type="radio"/>	B	<input type="radio"/>	C	<input type="radio"/>	D	
26	A	<input type="radio"/>	B	<input type="radio"/>	C	<input type="radio"/>	56	A	<input type="radio"/>	B	<input type="radio"/>	C	<input type="radio"/>	D	86	<input type="radio"/>	B	<input type="radio"/>	C	<input type="radio"/>	D	116	A	<input type="radio"/>	B	<input type="radio"/>	C	<input type="radio"/>	D	146	A	<input type="radio"/>	B	<input type="radio"/>	C	<input type="radio"/>	D	
27	A	<input type="radio"/>	B	<input type="radio"/>	C	<input type="radio"/>	57	A	<input type="radio"/>	B	<input type="radio"/>	C	<input type="radio"/>	D	87	A	<input type="radio"/>	B	<input type="radio"/>	C	<input type="radio"/>	D	117	A	<input type="radio"/>	B	<input type="radio"/>	C	<input type="radio"/>	D	147	A	<input type="radio"/>	B	<input type="radio"/>	C	<input type="radio"/>	D
28	A	<input type="radio"/>	B	<input type="radio"/>	C	<input type="radio"/>	58	A	<input type="radio"/>	B	<input type="radio"/>	C	<input type="radio"/>	D	88	A	<input type="radio"/>	B	<input type="radio"/>	C	<input type="radio"/>	D	118	A	<input type="radio"/>	B	<input type="radio"/>	C	<input type="radio"/>	D	148	A	<input type="radio"/>	B	<input type="radio"/>	C	<input type="radio"/>	D
29	<input type="radio"/>	B	<input type="radio"/>	C	<input type="radio"/>	D	59	<input type="radio"/>	B	<input type="radio"/>	C	<input type="radio"/>	D	89	A	<input type="radio"/>	B	<input type="radio"/>	C	<input type="radio"/>	D	119	A	<input type="radio"/>	B	<input type="radio"/>	C	<input type="radio"/>	D	149	A	<input type="radio"/>	B	<input type="radio"/>	C	<input type="radio"/>	D	
30	A	<input type="radio"/>	B	<input type="radio"/>	C	<input type="radio"/>	60	A	<input type="radio"/>	B	<input type="radio"/>	C	<input type="radio"/>	D	90	A	<input type="radio"/>	B	<input type="radio"/>	C	<input type="radio"/>	D	120	A	<input type="radio"/>	B	<input type="radio"/>	C	<input type="radio"/>	D	150	A	<input type="radio"/>	B	<input type="radio"/>	C	<input type="radio"/>	D