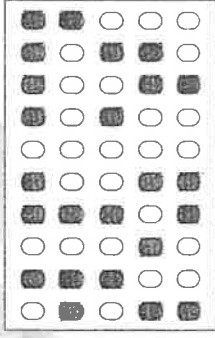




HOJA DE EXAMEN

NO FIRME ESTE EJERCICIO NI CONSIGNE NINGÚN OTRO DATO



TIPO EXAMEN

- ①
- ②
- ③
- ④
- ⑤
- ⑥
- ⑦
- ⑧
- ⑨
- ⑩

RESPUESTAS

1	<input type="radio"/>	B	<input type="radio"/>	C	<input type="radio"/>	D	31	<input type="radio"/>	B	<input type="radio"/>	C	<input type="radio"/>	D	61	<input type="radio"/>	A	<input type="radio"/>	B	<input type="radio"/>	C	<input type="radio"/>	D	91	<input type="radio"/>	B	<input type="radio"/>	C	<input type="radio"/>	D	121	<input type="radio"/>	A	<input type="radio"/>	B	<input type="radio"/>	C	<input type="radio"/>	D					
2	<input type="radio"/>	B	<input type="radio"/>	C	<input type="radio"/>	D	32	<input type="radio"/>	A	<input type="radio"/>	B	<input type="radio"/>	C	<input type="radio"/>	D	62	<input type="radio"/>	A	<input type="radio"/>	B	<input type="radio"/>	C	<input type="radio"/>	D	92	<input type="radio"/>	A	<input type="radio"/>	B	<input type="radio"/>	C	<input type="radio"/>	D	122	<input type="radio"/>	A	<input type="radio"/>	B	<input type="radio"/>	C	<input type="radio"/>	D	
3	<input type="radio"/>	A	<input type="radio"/>	B	<input type="radio"/>	C	D	33	<input type="radio"/>	A	<input type="radio"/>	B	<input type="radio"/>	C	<input type="radio"/>	D	63	<input type="radio"/>	A	<input type="radio"/>	B	<input type="radio"/>	C	<input type="radio"/>	D	93	<input type="radio"/>	A	<input type="radio"/>	B	<input type="radio"/>	C	<input type="radio"/>	D	123	<input type="radio"/>	A	<input type="radio"/>	B	<input type="radio"/>	C	<input type="radio"/>	D
4	<input type="radio"/>	B	<input type="radio"/>	C	<input type="radio"/>	D	34	<input type="radio"/>	B	<input type="radio"/>	C	<input type="radio"/>	D	64	<input type="radio"/>	A	<input type="radio"/>	B	<input type="radio"/>	C	<input type="radio"/>	<input type="radio"/>	D	94	<input type="radio"/>	A	<input type="radio"/>	B	<input type="radio"/>	C	<input type="radio"/>	D	124	<input type="radio"/>	B	<input type="radio"/>	C	<input type="radio"/>	D				
5	<input type="radio"/>	B	<input type="radio"/>	C	<input type="radio"/>	D	35	<input type="radio"/>	A	<input type="radio"/>	B	<input type="radio"/>	C	<input type="radio"/>	D	65	<input type="radio"/>	A	<input type="radio"/>	B	<input type="radio"/>	C	<input type="radio"/>	D	95	<input type="radio"/>	A	<input type="radio"/>	B	<input type="radio"/>	C	<input type="radio"/>	D	125	<input type="radio"/>	B	<input type="radio"/>	C	<input type="radio"/>	D			
6	<input type="radio"/>	A	<input type="radio"/>	B	<input type="radio"/>	C	D	36	<input type="radio"/>	A	<input type="radio"/>	B	<input type="radio"/>	C	<input type="radio"/>	D	66	<input type="radio"/>	A	<input type="radio"/>	B	<input type="radio"/>	C	<input type="radio"/>	D	96	<input type="radio"/>	A	<input type="radio"/>	B	<input type="radio"/>	C	<input type="radio"/>	D	126	<input type="radio"/>	A	<input type="radio"/>	B	<input type="radio"/>	C	<input type="radio"/>	D
7	<input type="radio"/>	B	<input type="radio"/>	C	<input type="radio"/>	D	37	<input type="radio"/>	A	<input type="radio"/>	B	<input type="radio"/>	C	<input type="radio"/>	D	67	<input type="radio"/>	B	<input type="radio"/>	C	<input type="radio"/>	<input type="radio"/>	D	97	<input type="radio"/>	B	<input type="radio"/>	C	<input type="radio"/>	<input type="radio"/>	D	127	<input type="radio"/>	B	<input type="radio"/>	C	<input type="radio"/>	<input type="radio"/>	D				
8	<input type="radio"/>	B	<input type="radio"/>	C	<input type="radio"/>	D	38	<input type="radio"/>	B	<input type="radio"/>	C	<input type="radio"/>	D	68	<input type="radio"/>	A	<input type="radio"/>	B	<input type="radio"/>	C	<input type="radio"/>	<input type="radio"/>	D	98	<input type="radio"/>	B	<input type="radio"/>	C	<input type="radio"/>	<input type="radio"/>	D	128	<input type="radio"/>	B	<input type="radio"/>	C	<input type="radio"/>	<input type="radio"/>	D				
9	<input type="radio"/>	B	<input type="radio"/>	C	<input type="radio"/>	D	39	<input type="radio"/>	A	<input type="radio"/>	B	<input type="radio"/>	C	<input type="radio"/>	D	69	<input type="radio"/>	A	<input type="radio"/>	B	<input type="radio"/>	C	<input type="radio"/>	D	99	<input type="radio"/>	B	<input type="radio"/>	C	<input type="radio"/>	<input type="radio"/>	D	129	<input type="radio"/>	A	<input type="radio"/>	B	<input type="radio"/>	C	<input type="radio"/>	D		
10	<input type="radio"/>	B	<input type="radio"/>	C	<input type="radio"/>	D	40	<input type="radio"/>	A	<input type="radio"/>	B	<input type="radio"/>	C	<input type="radio"/>	D	70	<input type="radio"/>	A	<input type="radio"/>	B	<input type="radio"/>	C	<input type="radio"/>	D	100	<input type="radio"/>	A	<input type="radio"/>	B	<input type="radio"/>	C	<input type="radio"/>	D	130	<input type="radio"/>	A	<input type="radio"/>	B	<input type="radio"/>	C	<input type="radio"/>	D	
11	<input type="radio"/>	A	<input type="radio"/>	B	<input type="radio"/>	C	D	41	<input type="radio"/>	A	<input type="radio"/>	B	<input type="radio"/>	C	D	71	<input type="radio"/>	A	<input type="radio"/>	B	<input type="radio"/>	C	<input type="radio"/>	D	101	<input type="radio"/>	B	<input type="radio"/>	C	<input type="radio"/>	<input type="radio"/>	D	131	<input type="radio"/>	A	<input type="radio"/>	B	<input type="radio"/>	C	<input type="radio"/>	D		
12	<input type="radio"/>	A	<input type="radio"/>	B	<input type="radio"/>	C	D	42	<input type="radio"/>	A	<input type="radio"/>	B	<input type="radio"/>	C	D	72	<input type="radio"/>	A	<input type="radio"/>	B	<input type="radio"/>	C	<input type="radio"/>	D	102	<input type="radio"/>	A	<input type="radio"/>	B	<input type="radio"/>	C	<input type="radio"/>	D	132	<input type="radio"/>	B	<input type="radio"/>	C	<input type="radio"/>	<input type="radio"/>	D		
13	<input type="radio"/>	A	<input type="radio"/>	B	<input type="radio"/>	C	D	43	<input type="radio"/>	A	<input type="radio"/>	B	<input type="radio"/>	C	D	73	<input type="radio"/>	A	<input type="radio"/>	B	<input type="radio"/>	C	<input type="radio"/>	D	103	<input type="radio"/>	A	<input type="radio"/>	B	<input type="radio"/>	C	<input type="radio"/>	D	133	<input type="radio"/>	A	<input type="radio"/>	B	<input type="radio"/>	C	<input type="radio"/>	D	
14	<input type="radio"/>	A	<input type="radio"/>	B	<input type="radio"/>	C	D	44	<input type="radio"/>	A	<input type="radio"/>	B	<input type="radio"/>	C	D	74	<input type="radio"/>	B	<input type="radio"/>	C	<input type="radio"/>	<input type="radio"/>	D	104	<input type="radio"/>	A	<input type="radio"/>	B	<input type="radio"/>	C	<input type="radio"/>	D	134	<input type="radio"/>	A	<input type="radio"/>	B	<input type="radio"/>	C	<input type="radio"/>	D		
15	<input type="radio"/>	A	<input type="radio"/>	B	<input type="radio"/>	C	D	45	<input type="radio"/>	A	<input type="radio"/>	B	<input type="radio"/>	C	D	75	<input type="radio"/>	A	<input type="radio"/>	B	<input type="radio"/>	C	<input type="radio"/>	D	105	<input type="radio"/>	B	<input type="radio"/>	C	<input type="radio"/>	<input type="radio"/>	D	135	<input type="radio"/>	A	<input type="radio"/>	B	<input type="radio"/>	C	<input type="radio"/>	D		
16	<input type="radio"/>	A	<input type="radio"/>	B	<input type="radio"/>	C	D	46	<input type="radio"/>	A	<input type="radio"/>	B	<input type="radio"/>	C	D	76	<input type="radio"/>	B	<input type="radio"/>	C	<input type="radio"/>	<input type="radio"/>	D	106	<input type="radio"/>	B	<input type="radio"/>	C	<input type="radio"/>	<input type="radio"/>	D	136	<input type="radio"/>	A	<input type="radio"/>	B	<input type="radio"/>	C	<input type="radio"/>	D			
17	<input type="radio"/>	B	<input type="radio"/>	C	<input type="radio"/>	D	47	<input type="radio"/>	B	<input type="radio"/>	C	<input type="radio"/>	D	77	<input type="radio"/>	B	<input type="radio"/>	C	<input type="radio"/>	<input type="radio"/>	D	107	<input type="radio"/>	A	<input type="radio"/>	B	<input type="radio"/>	C	<input type="radio"/>	<input type="radio"/>	D	137	<input type="radio"/>	A	<input type="radio"/>	B	<input type="radio"/>	C	<input type="radio"/>	D			
18	<input type="radio"/>	A	<input type="radio"/>	B	<input type="radio"/>	C	D	48	<input type="radio"/>	A	<input type="radio"/>	B	<input type="radio"/>	C	D	78	<input type="radio"/>	A	<input type="radio"/>	B	<input type="radio"/>	C	<input type="radio"/>	D	108	<input type="radio"/>	A	<input type="radio"/>	B	<input type="radio"/>	C	<input type="radio"/>	D	138	<input type="radio"/>	A	<input type="radio"/>	B	<input type="radio"/>	C	<input type="radio"/>	D	
19	<input type="radio"/>	A	<input type="radio"/>	B	<input type="radio"/>	C	D	49	<input type="radio"/>	B	<input type="radio"/>	C	<input type="radio"/>	D	79	<input type="radio"/>	A	<input type="radio"/>	B	<input type="radio"/>	C	<input type="radio"/>	D	109	<input type="radio"/>	A	<input type="radio"/>	B	<input type="radio"/>	C	<input type="radio"/>	D	139	<input type="radio"/>	A	<input type="radio"/>	B	<input type="radio"/>	C	<input type="radio"/>	D		
20	<input type="radio"/>	A	<input type="radio"/>	B	<input type="radio"/>	C	D	50	<input type="radio"/>	A	<input type="radio"/>	B	<input type="radio"/>	C	D	80	<input type="radio"/>	A	<input type="radio"/>	B	<input type="radio"/>	C	<input type="radio"/>	D	110	<input type="radio"/>	A	<input type="radio"/>	B	<input type="radio"/>	C	<input type="radio"/>	D	140	<input type="radio"/>	A	<input type="radio"/>	B	<input type="radio"/>	C	<input type="radio"/>	D	
21	<input type="radio"/>	A	<input type="radio"/>	B	<input type="radio"/>	C	D	51	<input type="radio"/>	A	<input type="radio"/>	B	<input type="radio"/>	C	D	81	<input type="radio"/>	A	<input type="radio"/>	B	<input type="radio"/>	C	<input type="radio"/>	D	111	<input type="radio"/>	A	<input type="radio"/>	B	<input type="radio"/>	C	<input type="radio"/>	D	141	<input type="radio"/>	A	<input type="radio"/>	B	<input type="radio"/>	C	<input type="radio"/>	D	
22	<input type="radio"/>	A	<input type="radio"/>	B	<input type="radio"/>	C	D	52	<input type="radio"/>	A	<input type="radio"/>	B	<input type="radio"/>	C	D	82	<input type="radio"/>	A	<input type="radio"/>	B	<input type="radio"/>	C	<input type="radio"/>	D	112	<input type="radio"/>	A	<input type="radio"/>	B	<input type="radio"/>	C	<input type="radio"/>	D	142	<input type="radio"/>	A	<input type="radio"/>	B	<input type="radio"/>	C	<input type="radio"/>	D	
23	<input type="radio"/>	B	<input type="radio"/>	C	<input type="radio"/>	D	53	<input type="radio"/>	A	<input type="radio"/>	B	<input type="radio"/>	C	D	83	<input type="radio"/>	A	<input type="radio"/>	B	<input type="radio"/>	C	<input type="radio"/>	D	113	<input type="radio"/>	B	<input type="radio"/>	C	<input type="radio"/>	<input type="radio"/>	D	143	<input type="radio"/>	A	<input type="radio"/>	B	<input type="radio"/>	C	<input type="radio"/>	D			
24	<input type="radio"/>	B	<input type="radio"/>	C	<input type="radio"/>	D	54	<input type="radio"/>	A	<input type="radio"/>	B	<input type="radio"/>	C	D	84	<input type="radio"/>	A	<input type="radio"/>	B	<input type="radio"/>	C	<input type="radio"/>	D	114	<input type="radio"/>	A	<input type="radio"/>	B	<input type="radio"/>	C	<input type="radio"/>	D	144	<input type="radio"/>	A	<input type="radio"/>	B	<input type="radio"/>	C	<input type="radio"/>	D		
25	<input type="radio"/>	A	<input type="radio"/>	B	<input type="radio"/>	C	D	55	<input type="radio"/>	A	<input type="radio"/>	B	<input type="radio"/>	C	D	85	<input type="radio"/>	A	<input type="radio"/>	B	<input type="radio"/>	C	<input type="radio"/>	D	115	<input type="radio"/>	A	<input type="radio"/>	B	<input type="radio"/>	C	<input type="radio"/>	D	145	<input type="radio"/>	A	<input type="radio"/>	B	<input type="radio"/>	C	<input type="radio"/>	D	
26	<input type="radio"/>	B	<input type="radio"/>	C	<input type="radio"/>	D	56	<input type="radio"/>	A	<input type="radio"/>	B	<input type="radio"/>	C	D	86	<input type="radio"/>	A	<input type="radio"/>	B	<input type="radio"/>	C	<input type="radio"/>	D	116	<input type="radio"/>	A	<input type="radio"/>	B	<input type="radio"/>	C	<input type="radio"/>	D	146	<input type="radio"/>	A	<input type="radio"/>	B	<input type="radio"/>	C	<input type="radio"/>	D		
27	<input type="radio"/>	B	<input type="radio"/>	C	<input type="radio"/>	D	57	<input type="radio"/>	A	<input type="radio"/>	B	<input type="radio"/>	C	D	87	<input type="radio"/>	A	<input type="radio"/>	B	<input type="radio"/>	C	<input type="radio"/>	D	117	<input type="radio"/>	A	<input type="radio"/>	B	<input type="radio"/>	C	<input type="radio"/>	D	147	<input type="radio"/>	A	<input type="radio"/>	B	<input type="radio"/>	C	<input type="radio"/>	D		
28	<input type="radio"/>	B	<input type="radio"/>	C	<input type="radio"/>	D	58	<input type="radio"/>	A	<input type="radio"/>	B	<input type="radio"/>	C	D	88	<input type="radio"/>	A	<input type="radio"/>	B	<input type="radio"/>	C	<input type="radio"/>	D	118	<input type="radio"/>	A	<input type="radio"/>	B	<input type="radio"/>	C	<input type="radio"/>	D	148	<input type="radio"/>	A	<input type="radio"/>	B	<input type="radio"/>	C	<input type="radio"/>	D		
29	<input type="radio"/>	B	<input type="radio"/>	C	<input type="radio"/>	D	59	<input type="radio"/>	A	<input type="radio"/>	B	<input type="radio"/>	C	D	89	<input type="radio"/>	A	<input type="radio"/>	B	<input type="radio"/>	C	<input type="radio"/>	D	119	<input type="radio"/>	B	<input type="radio"/>	C	<input type="radio"/>	<input type="radio"/>	D	149	<input type="radio"/>	A	<input type="radio"/>	B	<input type="radio"/>	C	<input type="radio"/>	D			
30	<input type="radio"/>	B	<input type="radio"/>	C	<input type="radio"/>	D	60	<input type="radio"/>	A	<input type="radio"/>	B	<input type="radio"/>	C	D	90	<input type="radio"/>	A	<input type="radio"/>	B	<input type="radio"/>	C	<input type="radio"/>	D	120	<input type="radio"/>	A	<input type="radio"/>	B	<input type="radio"/>	C	<input type="radio"/>	D	150	<input type="radio"/>	A	<input type="radio"/>	B	<input type="radio"/>	C	<input type="radio"/>	D		

506797-0000

